

**taurus**

FOOD PROCESSOR ROWZER  
Code:926001000  
1HC



**Taurus** Household Appliances  
*After-Sales Service*

Emulsifier and processor frozen foods

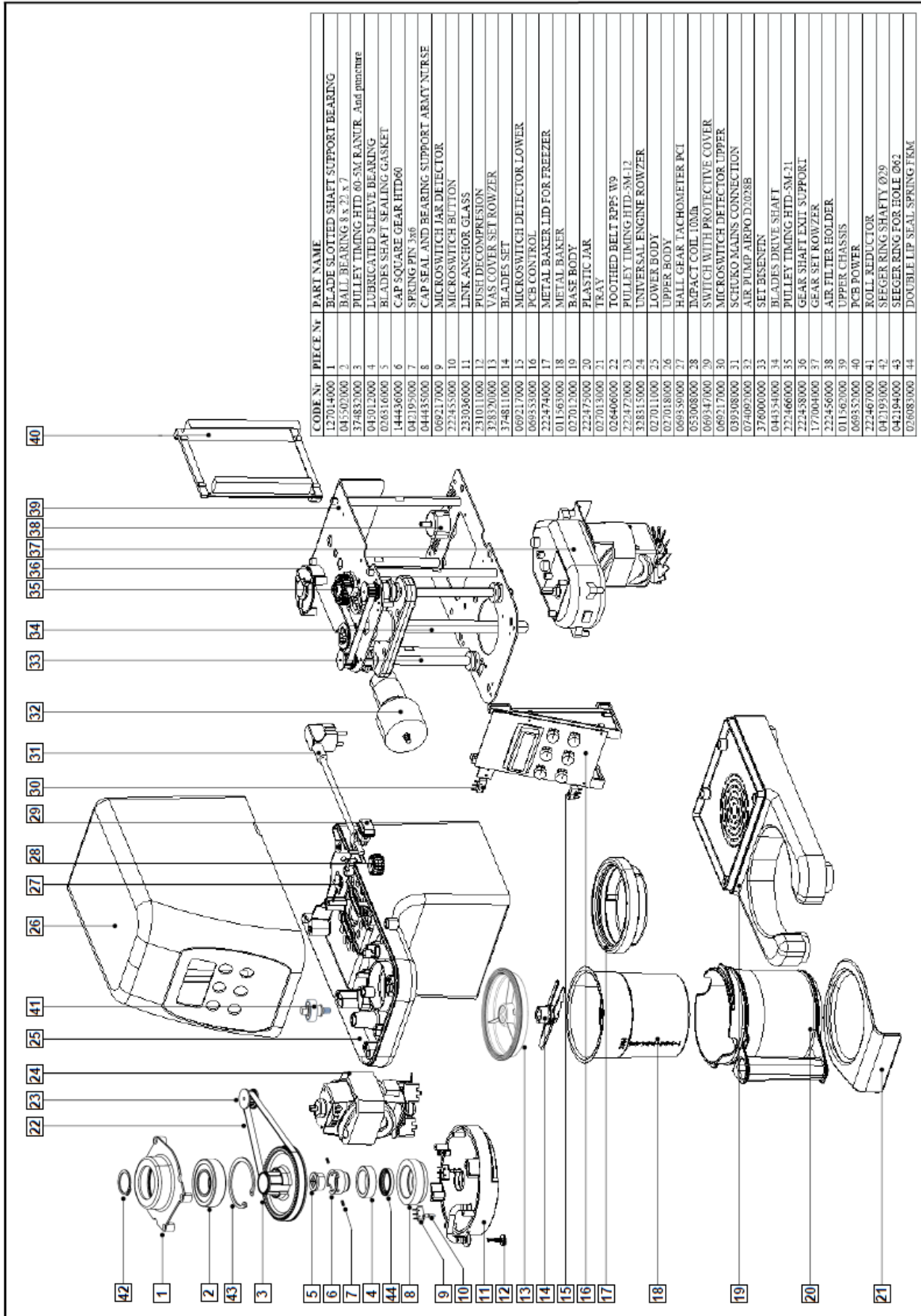
## **Rowzer**



### **Note:**

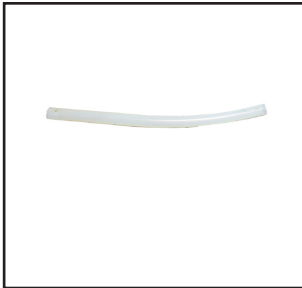
Approved distributors only.

---

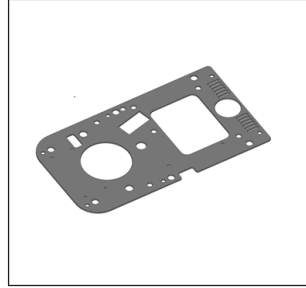




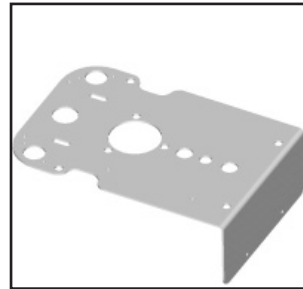
Exploded 1/4



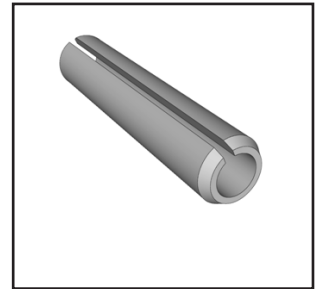
003976000



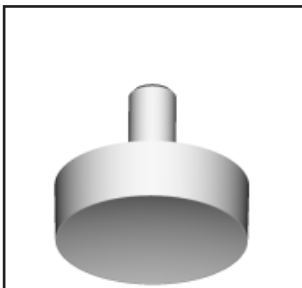
011561000



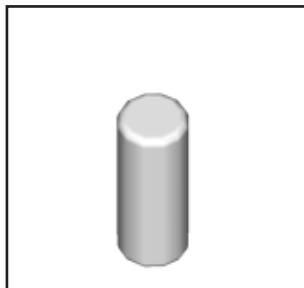
011562000



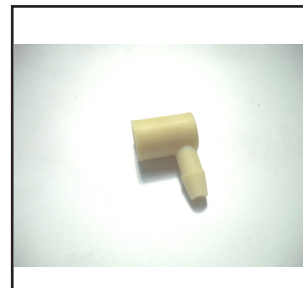
012016000



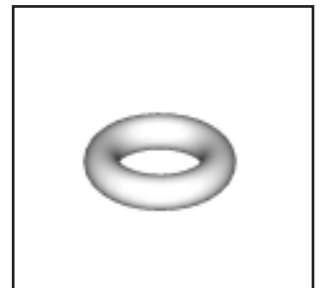
025138000



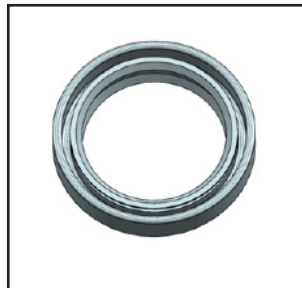
025506000



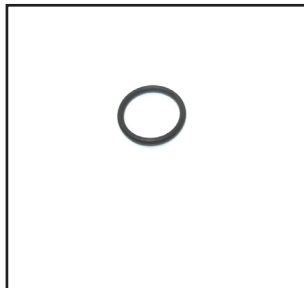
026045000



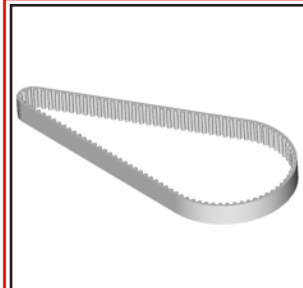
026066000



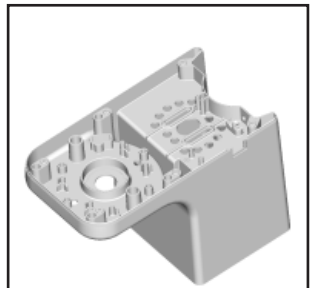
026083000



026405000



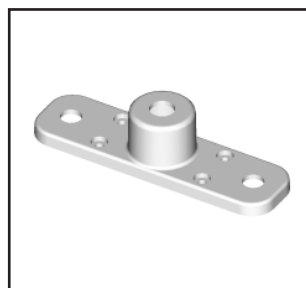
026406000



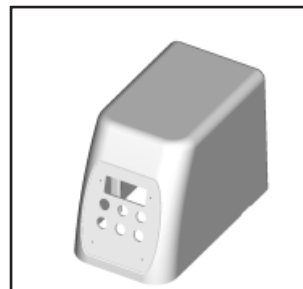
027011000



027012000



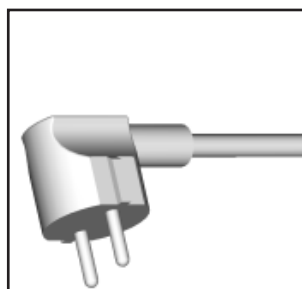
027015000



027018000



036081000



039308000



040722000



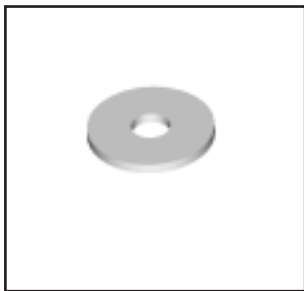
040723000



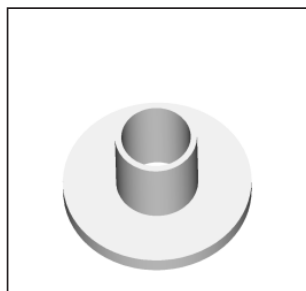
040725000



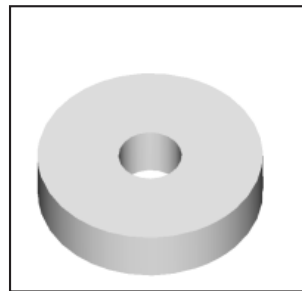
Exploded 2/4



041305000



041309000



041310000



041405000



042160000



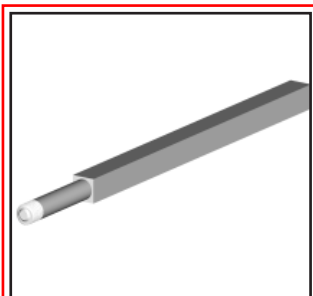
042193000



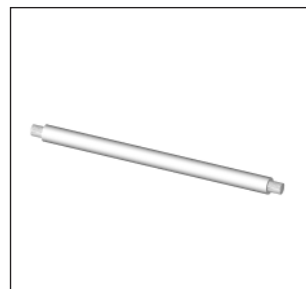
042194000



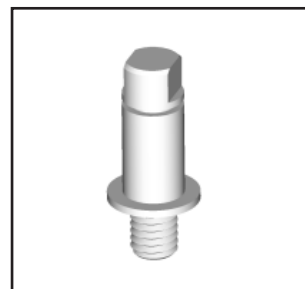
042195000



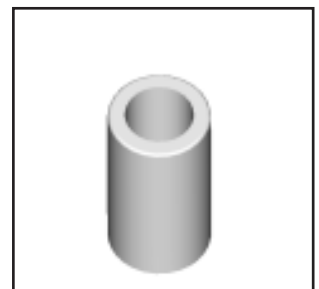
044354000



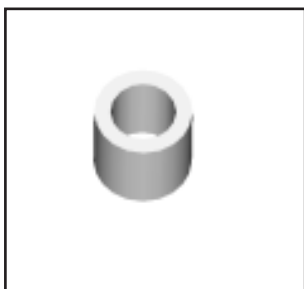
044355000



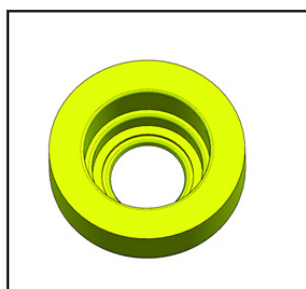
044356000



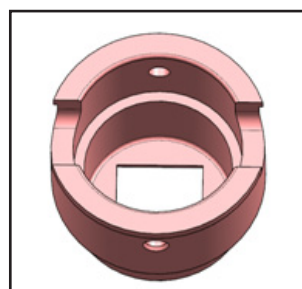
044430000



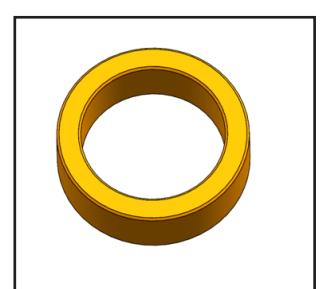
044431000



044435000



044436000



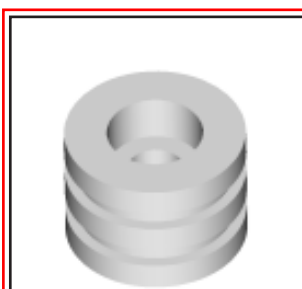
045012000



045502000



045505000



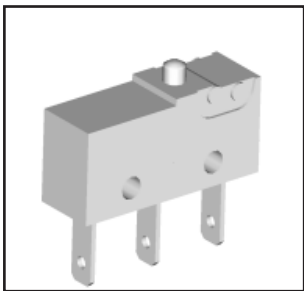
045508000



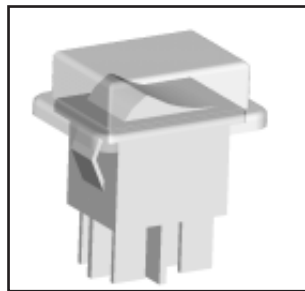
053008000



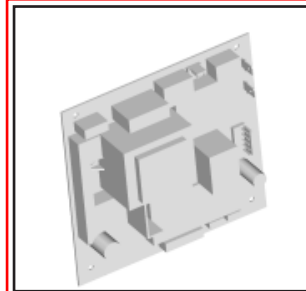
Exploded 3/4



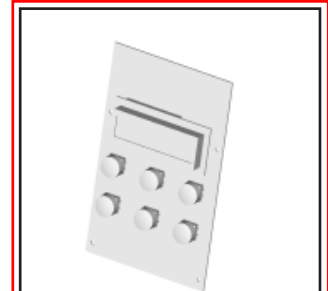
069217000



069347000



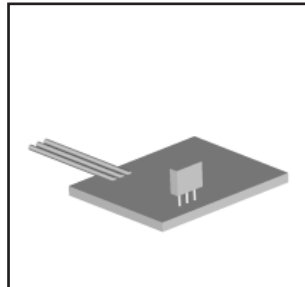
069352000



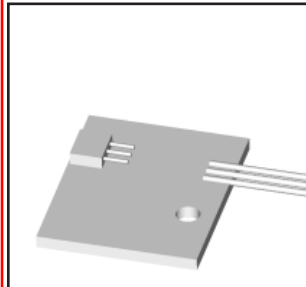
069353000



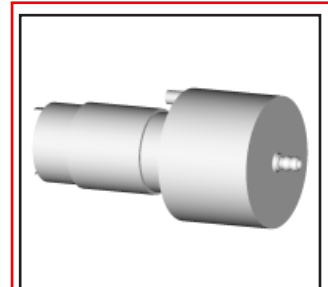
069357000



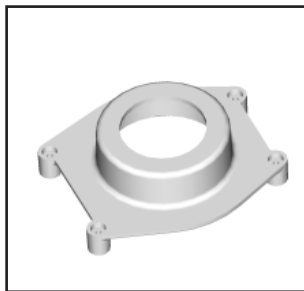
069358000



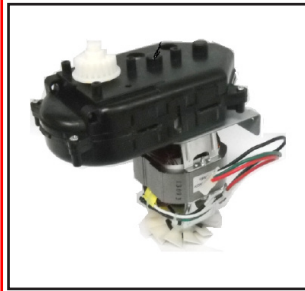
069359000



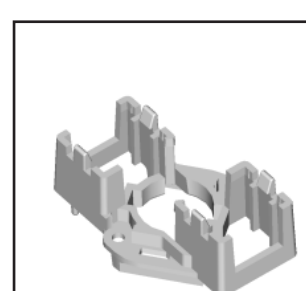
074092000



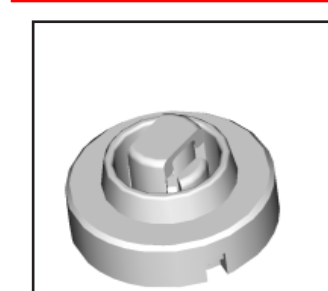
127014000



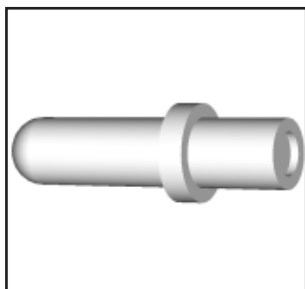
177004000



222420000



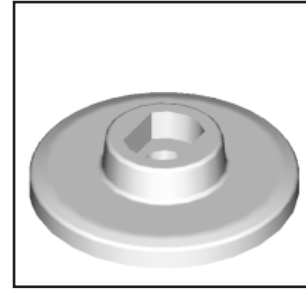
222421000



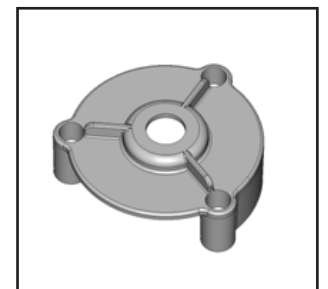
222455000



222456000



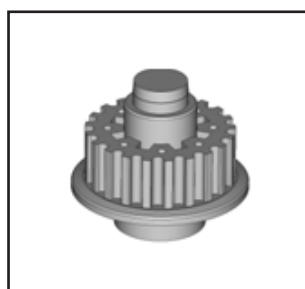
222457000



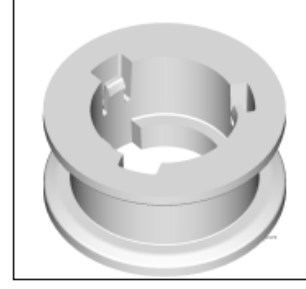
222458000



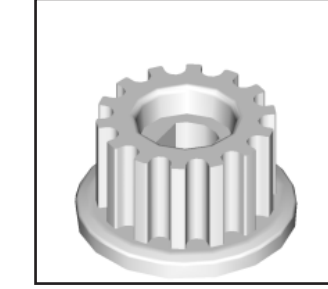
222465000



222466000



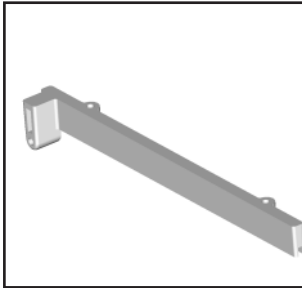
222467000



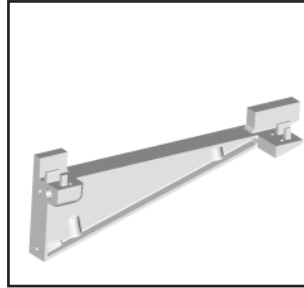
222468000



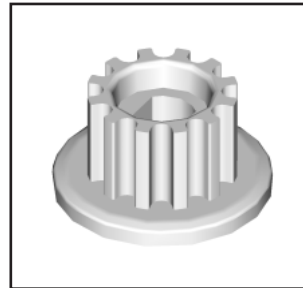
Exploded 4/4



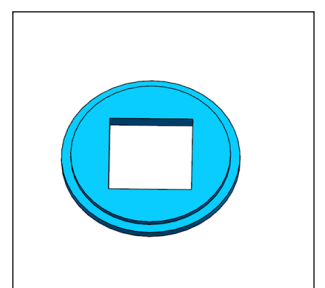
222469000



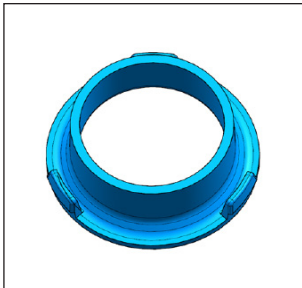
222470000



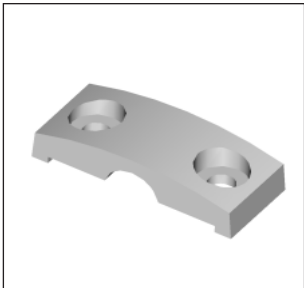
222472000



222478000



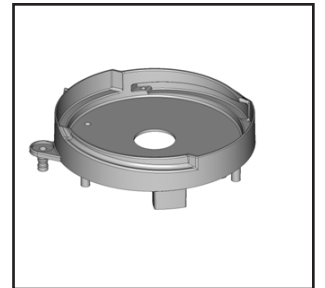
222479000



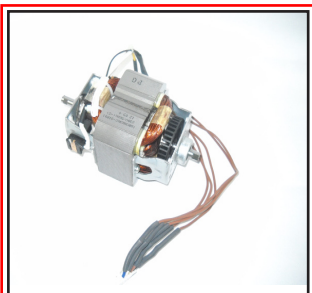
223307000



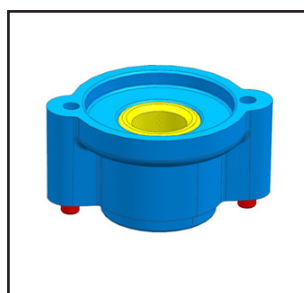
231011000



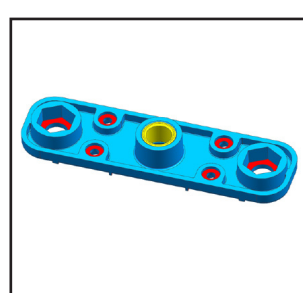
233036000



328315000



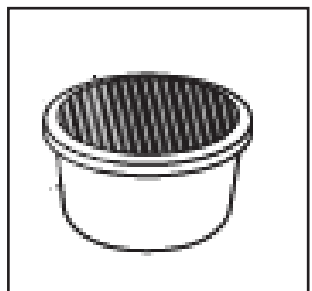
328316000



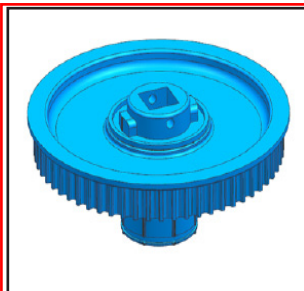
328317000



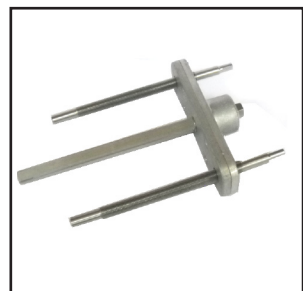
328318000



374803000



374832000



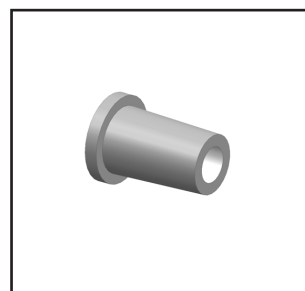
376000000



376001000



476283000



U200012000



CODE	DESCRIPTION
003976000	SILICONE TUBE D5X1M
011561000	LOWER CHASSIS
011562000	UPPER CHASSIS
012016000	SPRING PIN D3X16
025138000	HEIGHT-ADJUSTABLE BASE
025506000	NEODYMIUM MAGNET D4X10
026045000	COFFEE-MAKER PUMP PIPETTE
026066000	DECOMPRESSION BUTTON O-RING
026083000	DOUBLE LIP SEAL SPRING FKM
026405000	O-RING 15,6 X1, 78
026406000	TOOTHED BELT RPP5 WIDTH 9
027011000	LOWER BODY
027012000	BASE BODY
027015000	BLADES SHAFT UPPER SUPPORT
027018000	UPPER BODY
036081000	STAINLESS STEEL NTC JAR SPRING
039308000	SCHUKO MAINS CONNECTION
040722000	SELF-LOCKING NUT M-6 DIN 6923
040723000	SELF-LOCKING NUT M-8 DIN 9623
040725000	DIN934 HEX NUT PASO FINO 12X1, 25
041305000	4.2 FE WASHER X12X0 5 GALVANIZED
041309000	BUSH TI 00100201140 ISC PA6.6 (PURCHASES)
041310000	WASHER TU 00100201448 ISC
041405000	ADE 5 DIN 6797
042160000	CLIP 7 DIN 6799 V
042193000	SEEGER RING SHAFT 029
042194000	SEEGER RING FOR HOLE 062



CODE	DESCRIPTION
042195000	SPRING PIN 3X6
044354000	BLADES DRIVE SHAFT
044355000	CHASSIS SEPARATING COLUMN
044356000	SAVOY ROLLER GEAR SHAFT
044430000	BUSH 10x15x27.5
044431000	BUSH 10x15x12.5
044435000	CAP SEAL AND BEARING SUPPORT ARMY NURSE
044436000	CAP SQUARE GEAR HTD60
045012000	LUBRICATED SLEEVE BEARING
045502000	BALL BEARING 8 X 22 X 7
045505000	AXIAL BALL BEARING 10X26X11
045508000	DOUBLE AXIAL BALL BEARING 10x32x2
053008000	IMPACT COIL 10mHH
069217000	MICROSWITCH
069347000	SWITCH WITH PROTECTIVE COVER
069352000	PCB POWER
069353000	PCB CONTROL
069357000	PCI CONTROL - PCI POWER CONNECTOR SET
069358000	HALL MOTOR TACHOMETER PCI SET
069359000	HALL GEAR TACHOMETER PCI
074092000	BOMA AIR AIRPO D2028B
077004000	GEAR SET ROWZER
127014000	BLADE SLOTTED SHAFT SUPPORT BEARING
222420000	NTC MOTOR TACHOMETER SUPPORT
222421000	MOTOR SHAFT MULTI-POLE FERRITE SUPPORT
222455000	MICROSWITCH BUTTON

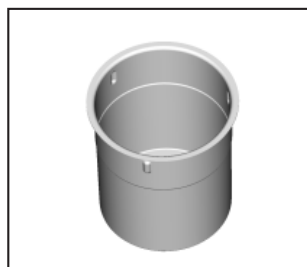




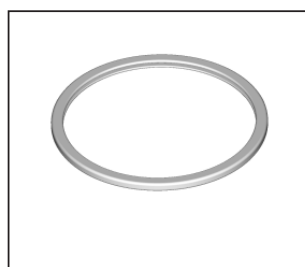
CODE	DESCRIPTION
222456000	AIR FILTER HOLDER
222457000	TOOTHED PULLEY WASHER HTD-14-5M
222458000	SAVOY GEAR SHAFT EXIT SUPPORT
222465000	IMAN SUPPORT REDUCTION
222466000	PULLEY TIMING HTD-5M-21
222467000	ROLL RECUCTOR SAVOY
222468000	PULLEY TIMING HTD-5M-14
222469000	PCB POWER SUPPORT
222470000	PCB CONTROL SUPPORT
222472000	PULLEY TIMING HTD-5M-12
222478000	SHAFT WASHER CLEANER
222479000	ARO WASHER SET TO TOP
223307000	FLANGE HALF ROUND
231011000	PUSH DECOMPRESSION
233036000	LINK ANCHOR GLASS
328315000	UNIVERSAL ENGINE ROWZER
328316000	THREADED ROD BEARING SET SUPPORT
328317000	Fixed throughout SUPPORT LOWER BLADE SHAFT PV
328318000	LACY GLASS SET ACOPLAIENTO PV
374803000	AIR FILTER SET ROWZER
374832000	PULLEY TIMING HTD 60-5M RANUR. And puncture
376000000	SET BISENFIN
376001000	SAVOY SET ROLLER GEAR
476283000	BODY SET ROWZER
U200012000	PASACABLES 1015-1036-1084



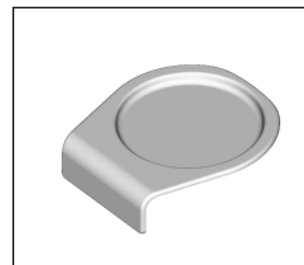
Accesories



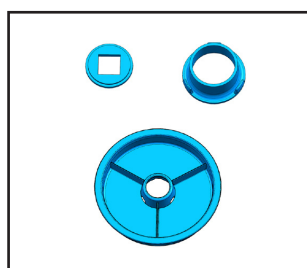
011563000



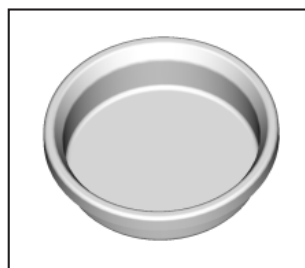
026068000



027013000



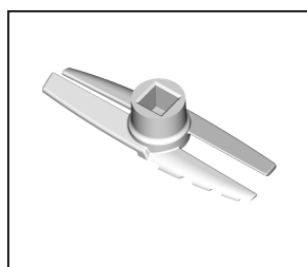
328320000



222474000



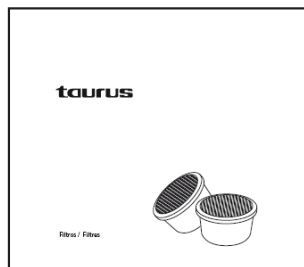
222475000



374811000



999179000



999182000

Codes Accesories

CODE	DESCRIPTION
011563000	METAL BEAKER
026068000	LID SEAL BEAKER
027013000	TRAY
328320000	VAS COVER SET ROWZER 7DC
222474000	METAL BEAKER LID FOR FREEZER
222475000	PLASTIC JAR
374811000	BLADES SET
999179000	ACCESORY SST JAR (4LZ)
999182000	ACC ROWZER (CARBON FILTER)



## Problems and Remedies

Anomaly	Repair
It does not start	Check that it is connected to the mains. Check that the main switch is in the "ON" position.
It does not detect the jar	Check that the jar is properly positioned and has correctly reached 90° from the start Check that the jar lid has been fitted. Check that no left-over ice-cream is hindering the positioning of the jar.
The appliance returns to start without processing the ice-cream	Possible overheating of the motor. Allow the appliance to cool down. Possible surge in the mains.
The appliance takes a very long time to make the first portion	Ice-cream very soft or a temperature over -18°C that the appliance cannot detect.
The jar opens during processing of the ice-cream	Check that the jar lid has been fitted. Check that the blade is correctly positioned.

## Special messages

Awaiting JAR	Means that the jar is not in place or has been incorrectly inserted.
Starting	Means that it is returning to its initial position
Insert PORTION	Means that it is operational awaiting insertion of the portion
2P	Means that a double processing will be performed on the selected portions.
Cleaning wait	Means that the spindle is lowering to its lower position
Cleaning Remove the JAR	Means that the spindle has reached its lower position and the jar may be removed in order to clean the spindle.
Language	Means that you have entered the language menu to select the desired language.



Technical Characteristics

Modelo	Rowzer
Typ	SOFTICE IPZ1
Voltaje	220-240V 50/60Hz
Potencia	800W

Electrical diagram

